

PantOs DG *XP*

BLUEx

PantOs DG XP

PROFESSIONAL TECHNOLOGY



Control

Symbols are available for immediate set-up. 7 types of examinations and 4 patient's sizes can be combined.

Technique factors, automatically provided by selection of examination and size of patient, can be adjusted if desired.

PantOs DG XP is a digital panoramic X-ray system of new conception equipped with a specific detector for diagnostic imaging.

The particular features of sensitivity and resolution of the digital sensor assure consistent radiographic quality.

Use is straightforward, with automatic image acquisition and display on the computer screen.

Operations

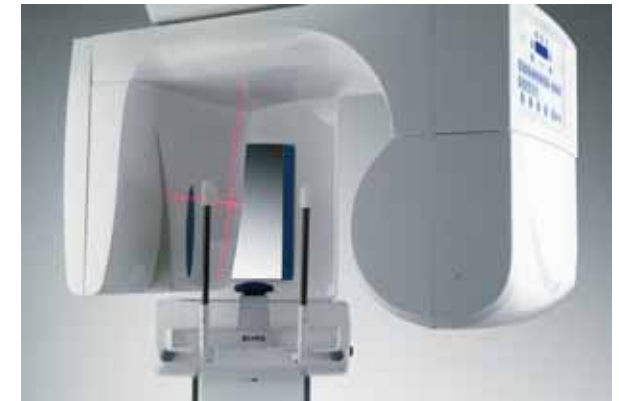
Precision alignment is done with patient still by means of 3 laser beams and a motorized system for carriage translation.

Positioning tools include bite block and auxiliary chin rest. Temporal resting bars are available on request (optional extra).

The frontal mirror can be angled.

A pushbutton unlocks the brakes of the vertical movement.

The overall structure is compact. A self-standing base is available too (optional extra).



Radiology

The X-ray generator features constant potential with high frequency electronics.

The imparted dose is optimized during the exposure.

A thermal protection minimizes the waiting time.

Combined movements of rotation and translation of the carriage are program controlled.





The diagnostic image can be processed and magnified as needed to outline the most important details, then printed, dispatched electronically or stored.





Blue X Imaging has grown due to a vast experience in manufacturing of dental radiographic systems. Products such as IntraOs 70, PantOs 16 e PantOs DG are known and appreciated at worldwide level. The radiographic system PantOs DG XP here presented is a highly technological product of latest generation.

Panoramic X-ray

- Constant potential high-frequency multi-pulse X-ray generator microprocessor controlled
- Focal spot 0.5 IEC 336
- Technique factors: anodic voltage from 61 to 82 kV, anodic current from 4 to 10 mA, maximum exposure time 15 s
- Source image distance 51 cm
- Panoramic examinations: Adult, Child, Left-Side Dentition, Right-Side Dentition, Anterior Dentition, Temporo-Mandibular Joint (TMJ) Open/Closed Mouth, Maxillary Sinus
- Weight 200 kg
- Space occupied: minimum height 220 cm, maximum height 227 cm, minimum width 96 cm, useful width 126 cm, minimum depth 103 cm

Digital receptor

- CCD sensor
- Spatial resolution > 5 line pairs per mm
- Acquisition dynamics on 12 levels
- Acquisition area equivalent to 15 x 30 cm
- Computer interface via PCI card
- Application program OrisWin Pan for Windows XP/NT/2000
- Image size as per acquisition 3200 x 1600 pixels
- Storage format BMP or JPG

BLUEX

Blue X Imaging Srl

Via Idiomi 1/33 • 20090 Assago • Italy
Phone +39 02 4571 2171 • Fax +39 02 4570 3385
e-mail: bluex@bluex.it • www.bluex.it